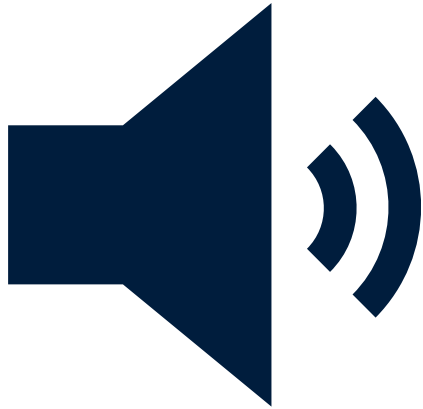


# Communicating in Conservative Contexts: Strategies for Raising Health Equity Issues Effectively

*Tuesday, July 13, 2021*

Sponsored by **Center for Health Leadership and Practice** in  
partnership with **Dialogue4Health** and the **FrameWorks Institute**

**Audio**



**Questions**



**Live Captions**

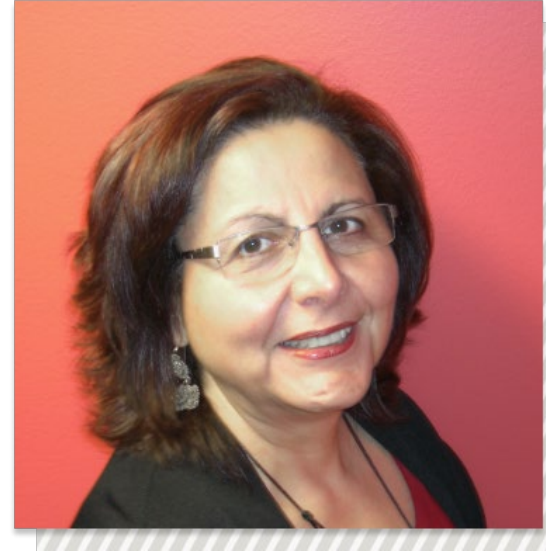


# Carmen Rita Nevarez, MD, MPH

Sr. Vice President, External  
Relations and Preventive Medicine,  
Public Health Institute (PHI)

Director, Center for Health  
Leadership and Practice

Director, Dialogue4Health, Public  
Health Institute



## BACKGROUND & EXPERIENCE

---

- Former HHS Agency Director & Health Officer, City of Berkeley
- Former Medical Director, La Clínica de la Raza
- Past President, American Public Health Association
- Board Member, Latino Coalition for a Healthy California

# Julie Sweetland, PhD, MA

Senior Advisor, the FrameWorks  
Institute



## RELEVANT EXPERIENCE

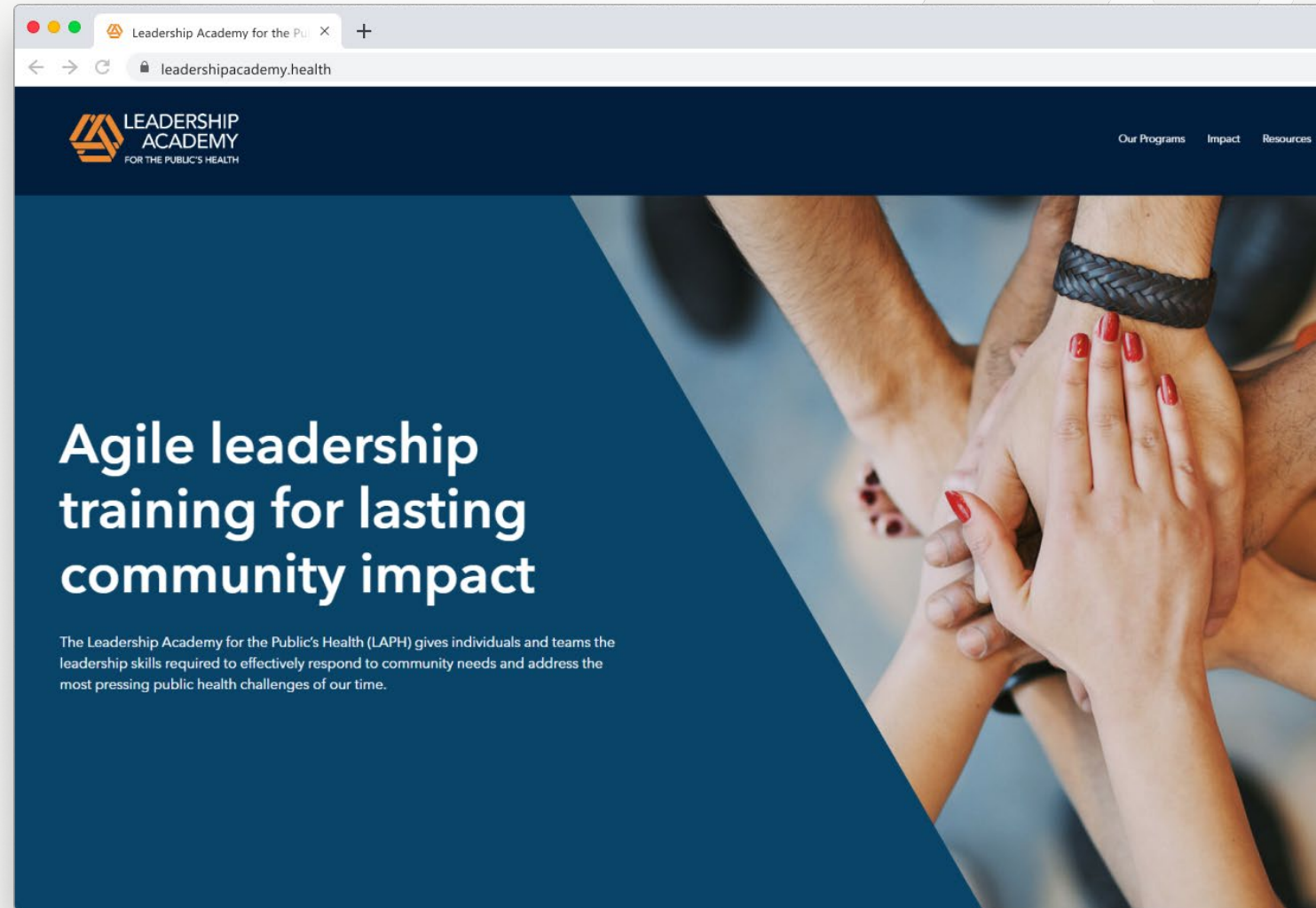
---

- Sociolinguist by training
- Has led reframing initiatives on climate change, public education, childhood adversity, tobacco disparities, and more
- Her strategic guidance has helped leading advocates, policymakers, and scientists deepen their impact
- Previously worked in progressive education reform and published research on the intersection of language and race

# Applications for NLAPH's eleventh cohort open soon!

Visit the NLAPH program page of our website to learn more. Information about how to apply will be available in **early August**.

<https://leadershipacademy.health/programs/nlaph>



# Thank You!

NEXT WEBINAR

TUESDAY, AUGUST 24  
Equity Through Public Health Law

[Register now](#)

VISIT OUR WEBSITE

[leadershipacademy.health](https://leadershipacademy.health)

CONTACT US

[info@healthleadership.org](mailto:info@healthleadership.org)  
(510) 285-5586